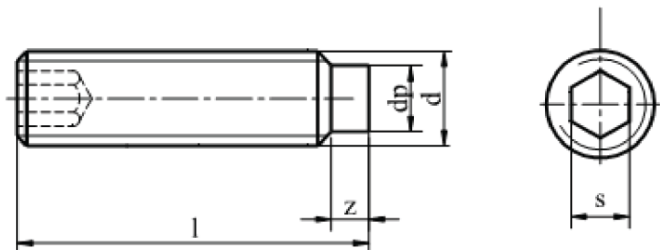
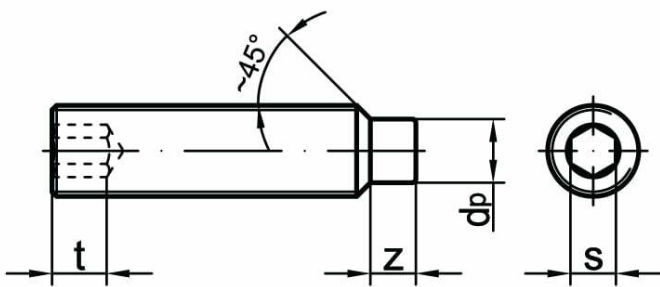
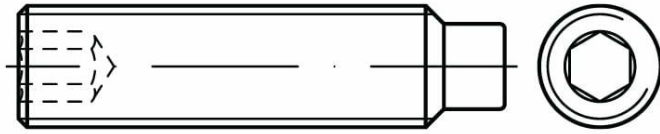




# Hex socket set screws with dog point DIN 915



STANDARD	MATERIAL	CLASS	COATING
DIN 915 PN 82316 ISO 4028	45H A2 A4		galvanized zinc

d	M3		M4		M5		M6		M8		M10	
d <sub>p</sub>	2		2,5		3,5		4		5,5		7	
s	1,5		2		2,5		3		4		5	
z <sub>max</sub>	l<5	1	l<6	1,25	l<6	1,5	l<8	1,75	l<10	2,25	l<12	2,75
	l>5	1,75	l>6	2,25	l>6	2,75	l>8	3,25	l>10	4,3	l>12	5,3

d	M12		M14		M16		M20		M24		
d <sub>p</sub>	8,5		10		12		15		18		
s	6		6		8		10		12		
z <sub>max</sub>	l<16	3,25	l<18	3,8	l<20	4,3	l<25	5,3	l<30	6,3	
	l>16	6,3	l>18	7,36	l>20	8,36	l>25	10,36	l>30	12,43	