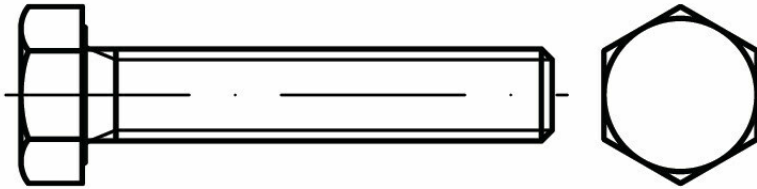




Hex cap screws, imperial thread UNC ANSI B18.2.1 (~DIN 933)



STANDARD	MATERIAL	CLASS	COATING
~DIN 933 ~ISO 4017 ~PN 82105	steel A2 (INOX)	~8.8 (Grade 5) ~10.9 (Grade 8)	no coating zinc plated