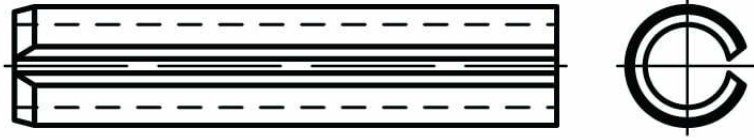
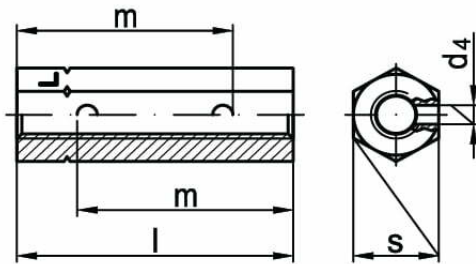




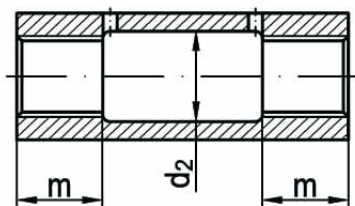
# Nakrętki napinające sześciokątne DIN 1479, PN 82267



≤ M 16



≥ M 20



NORMA	MATERIAŁ	KLASA	POWŁOKA
DIN 1479 PN 82267	stal A2 A4 mosiądź		cynk galwaniczny

d	M6	M8	M10	M12	M16	M20	M24	M30	M36
d <sub>2</sub>	–	–	–	–	–	21	26	32	38
d <sub>1</sub>	4	4	4	4	4	4	4	4	4
l	30	35	45	55	75	95	115	125	145
m	22,5	25	33	40	55	24	29	36	45
s	10	13	17	19	24	30	36	46	55
zakres napinania	15	15	21	25	35	47	57	53	70