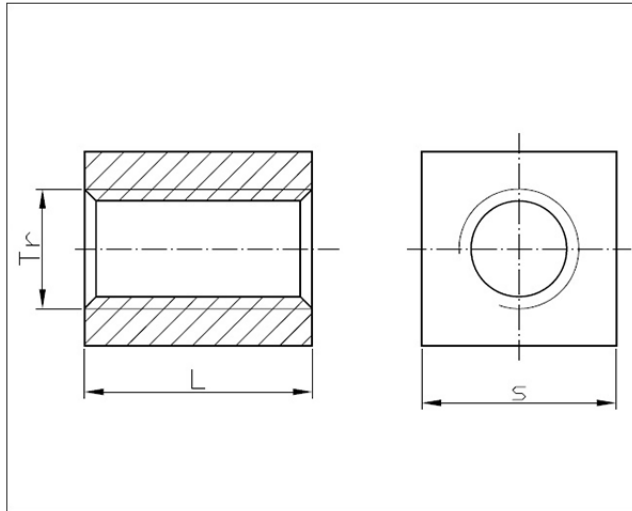




Nakrętki trapezowe kwadratowe DIN 103



NORMA	MATERIAŁ	KLASA	POWŁOKA
DIN 103	stal brqz		

d	TR 12	TR 14	TR 16	TR 18	TR 20	TR 24	TR 30	TR 36	TR 40	TR 50
S	25	30	30	35	40	45	50	60	60	70
L	25	35	35	45	50	55	60	70	70	90
Skok gwintu (mm)	3	4	4	4	4	5	6	6	7	8